

SMM

**ENVIROMENTAL SITE REPORT
2024**



No	Contents	Page
1	MD Greeting	2
2	Summary of the company's business	3
	2.1 Location Map	4
	2.2 Company Profile	5
	2.3 Company Layout	6
3	Environmental Policy	7 ~ 8
4	Status of Environmental Management System	9
	4.1 Company's achievements	10
	4.2 Environmental Organization Chart	11
5	Environmental Objective and Achievement	12 ~ 13
6	Information and indicators that describe the status of activities for environmental impacts and reduction measures	
	6.1 Environmental Load	14 ~ 18
	6.2 Wastes Management	19 ~ 23
	6.3 Energy Saving	24 ~ 25
	6.4 Rainwater Harvesting System	26 ~ 27
7	Education for employees	28 ~ 29
8	Contact Information	30



Greeting



Mr. Sam Chen
Director
Sharp Manufacturing Corporation (M) Sdn. Bhd

Sharp Manufacturing Corporation (SMM) is located in the southern region of peninsular Malaysia. We are site manufacturing Computer Entertainment System and LCD TV of different models exported to many countries throughout the world and computer entertainment system.

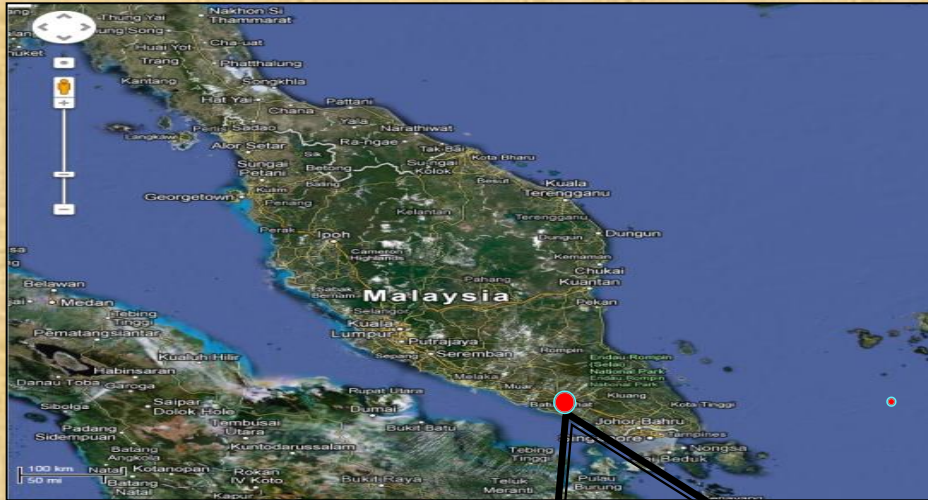
Besides producing the high quality products, we also committed in preservation and protection of the environment. SMM carries out its operations in line with compliance to Malaysian and corporate environmental directives, regulation and laws.

SMM is continuously carried out environmental activities inside and outside the company to interact with both our employees and neighborhood society to up lifts their environmental awareness.

This report describes the main environmental activities carried out in the year of FY2023 (April 2023 – March 2024) by the company for your better understanding.

Company Location

Location Map



SMM was located in strategic industrial park named Kawasan Perindustrian Sri Gading, 25km from Ayer Hitam North South Highway Interchange, 120km from Singapore and 260km south from capital of Malaysia, Kuala Lumpur.

COMPANY PROFILE

COMPANY NAME	: SHARP MANUFACTURING CORPORATION (M) SDN.BHD. (198901011260)
ADDRESS	: PLO-225 KAWASAN PERINDUSTRIAN SRI GADING, 83009 BATU PAHAT, JOHOR DARUL TAKZIM
DIRECTORS:	
CHAIRMAN	: MR. OKAMOTO HIROFUMI
DIRECTOR	: MR. SAM CHEN
DIRECTOR	: MR. WON YIN HOCK
DATE FOUNDED	: OCTOBER 1989
PROD. STARTED	: JUNE 1990
PAID-UP CAPITAL	: RM 162 MILLION
SHARE HOLDERS	: SHARP CORPORATION [100%]
FISCAL YEAR	: MARCH
LINE OF BUSINESS:	
PRODUCTION OF	: Liquid Crystal Display (LCD) Television / Liquid Crystal Display Monitor and their kits thereof, PWB assembly and their kits thereof & Computer Entertainment System (CES) and their kits thereof.
EXPORT MARKET	: JAPAN, ASIA, EUROPE, AMERICA
LAND AREA	: 142,387M ²
BUILD-UP AREA	: 74,612M ²
EMPLOYEES	: 917 (1 st April 2024)
ACHIEVED	: ISO 9001:2015 BY SIRIM & ISO 14001:2015 BY SIRIM

Plant Layout



Plant 1

Auto SMT process,
Production PWB,
and Training Center.
(12,375 m²)



Plant 2

LCD TV (19"~80") Final
Assembly process,
Purchasing, Engineering,
Administration office,
Shipping and Warehouse.
(15,720 m²)



Plant 3

Module Repair,
Warehouse and Gaming
Entertainment
Production
(46,517 m²)

Policy

Environmental Policy

This environmental policy indicates our commitment to protect the environment. We will explore and apply the best practical means to reduce adverse significant impact from our activities, products & services in our continuous quest to manufacture the product with the best quality and environmental friendly.

The following pro-active efforts shall be taken in order to fulfill our commitment:

Identify existing and potential pollution. Recommended actions, objectives & targets will be established in the environmental programs to ensure a progressive and systematic means in pollution prevention, waste reduction & minimization of energy consumption

Ensure compliance with applicable legal requirements & with other requirements which relate to its environmental aspects.

Promote environmental protection in line with Sharp environmental policy.

Annually review this environmental policy together with the environmental objectives & targets.

Publicize and communicate this environmental policy to all persons who work for or on behalf & make it readily available to the public.

We will achieve continual improvement and prevention of pollution through our systematic Environmental Management System.

Status of Environmental Management System

CERTIFICATION

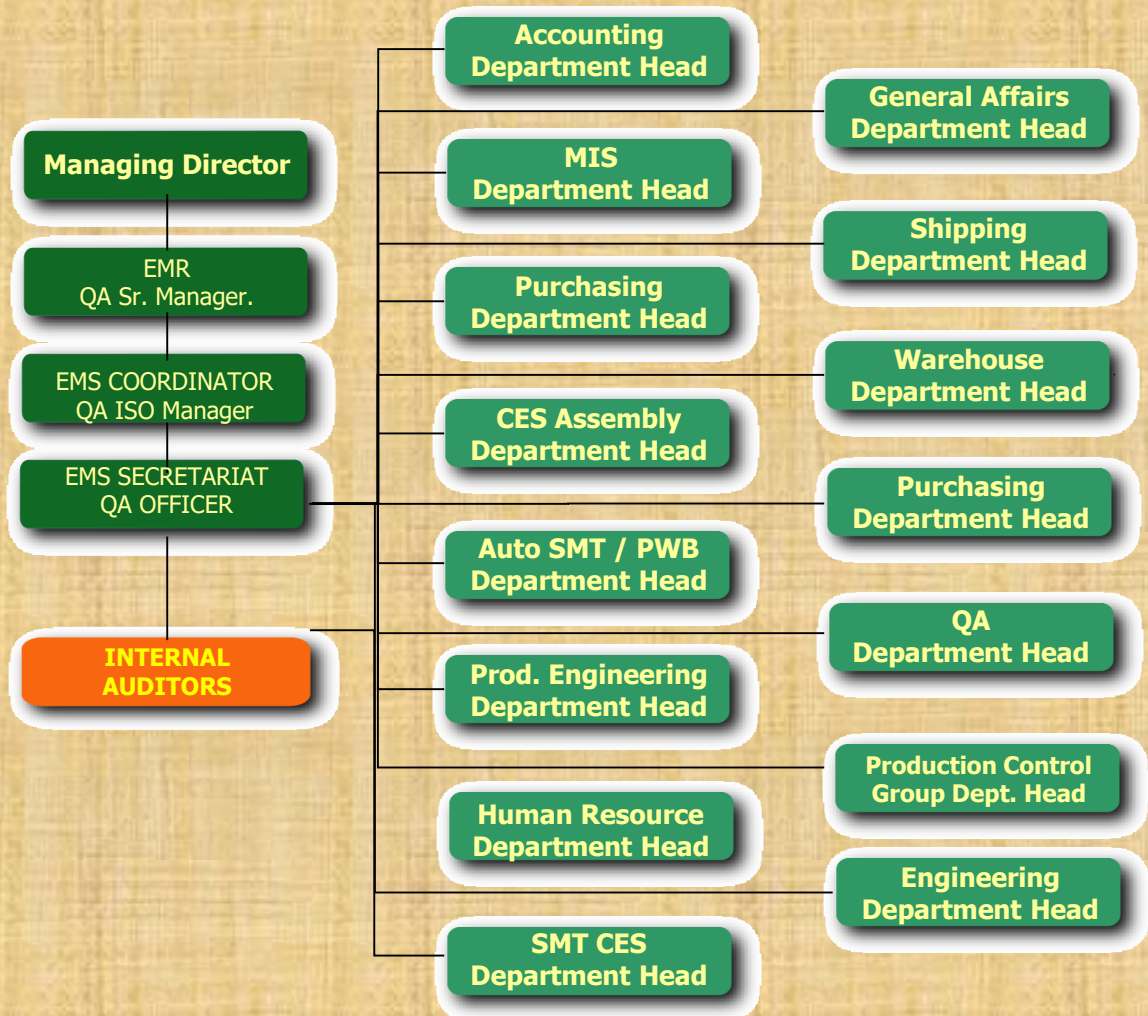
ISO 9001:2015 CERTIFICATE



ISO 14001:2015 CERTIFICATE



EMS Organization Chart

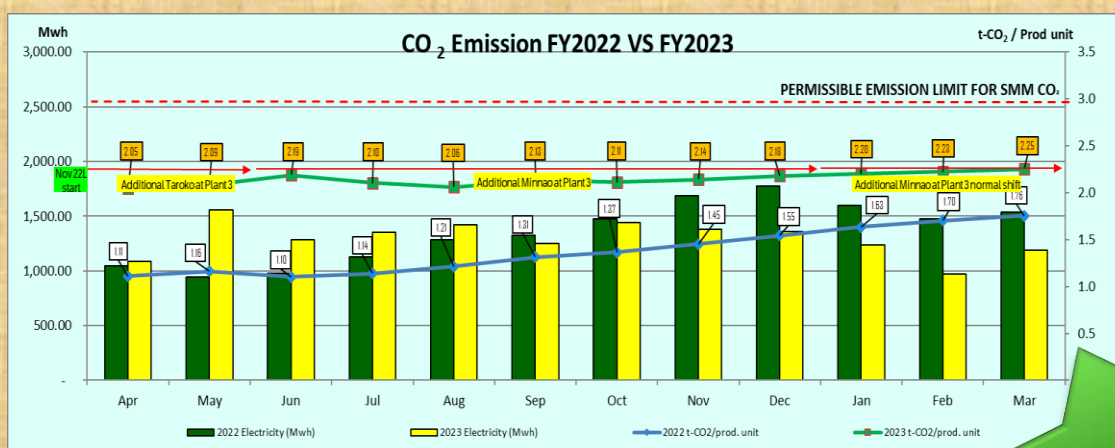


Environmental Objective & Target

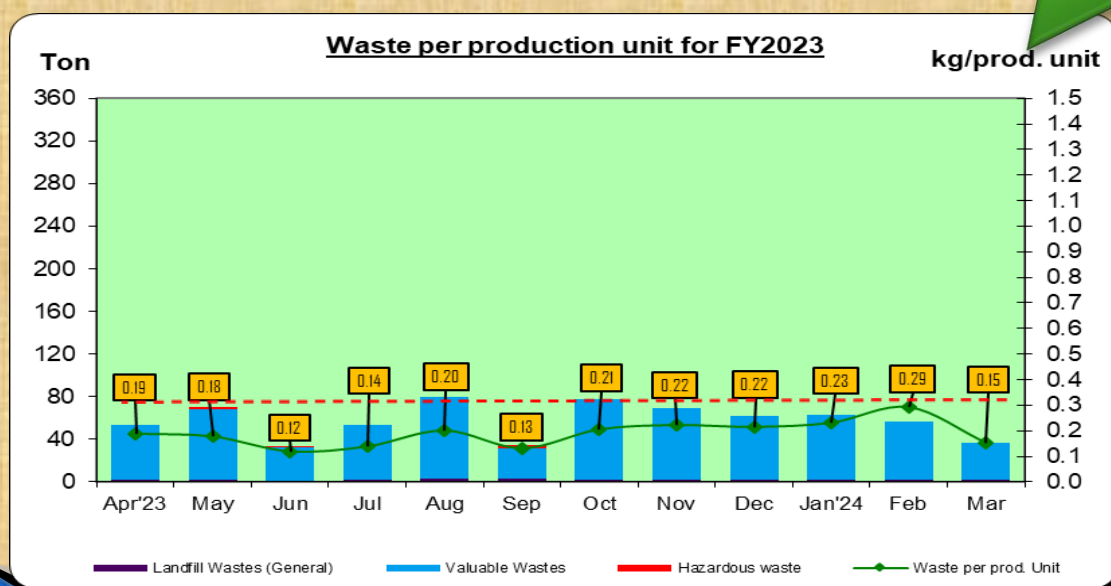
Objective and Target

Items	CO ₂ Emission	Wastes
Objective	Reduction of CO ₂ emission	Reduction of Manufacturing wastes
Target	To reduce of CO ₂ emission (t-CO ₂ /Prod.Unit) not more 3.0 t-CO ₂	To reduce manufacturing wastes generation (Kg/Prod.unit).SMM target <u>not over 0.3kg/prod. unit</u>

Achievement

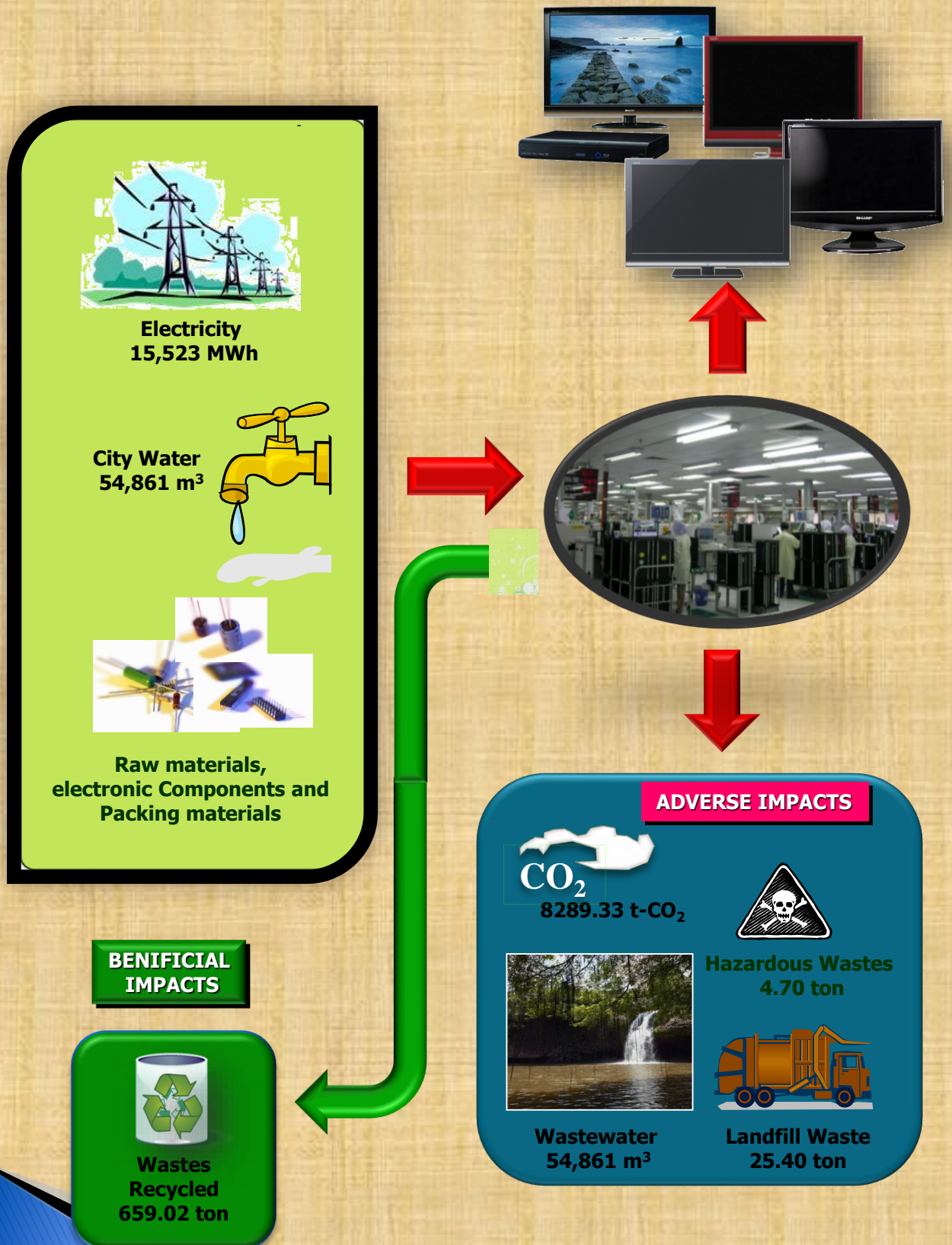


Achieve







Environmental Load





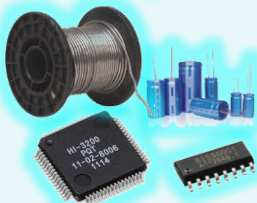


Environmental Load



Measures to reduce environmental impacts

Consume	Environment al Impact	Measure to reduce environmental impact
Electricity 	CO₂ emission 	<p>1. Implement delay “ON” and early “OFF” air-condition policy. On at 8.00 am OFF during lunch hour and 15 minutes before stop working at 5.30 pm.</p> 
		<p>2. Centralized the dept. office in one location to share the air-condition and lighting.</p> 

Measures to reduce environmental impacts

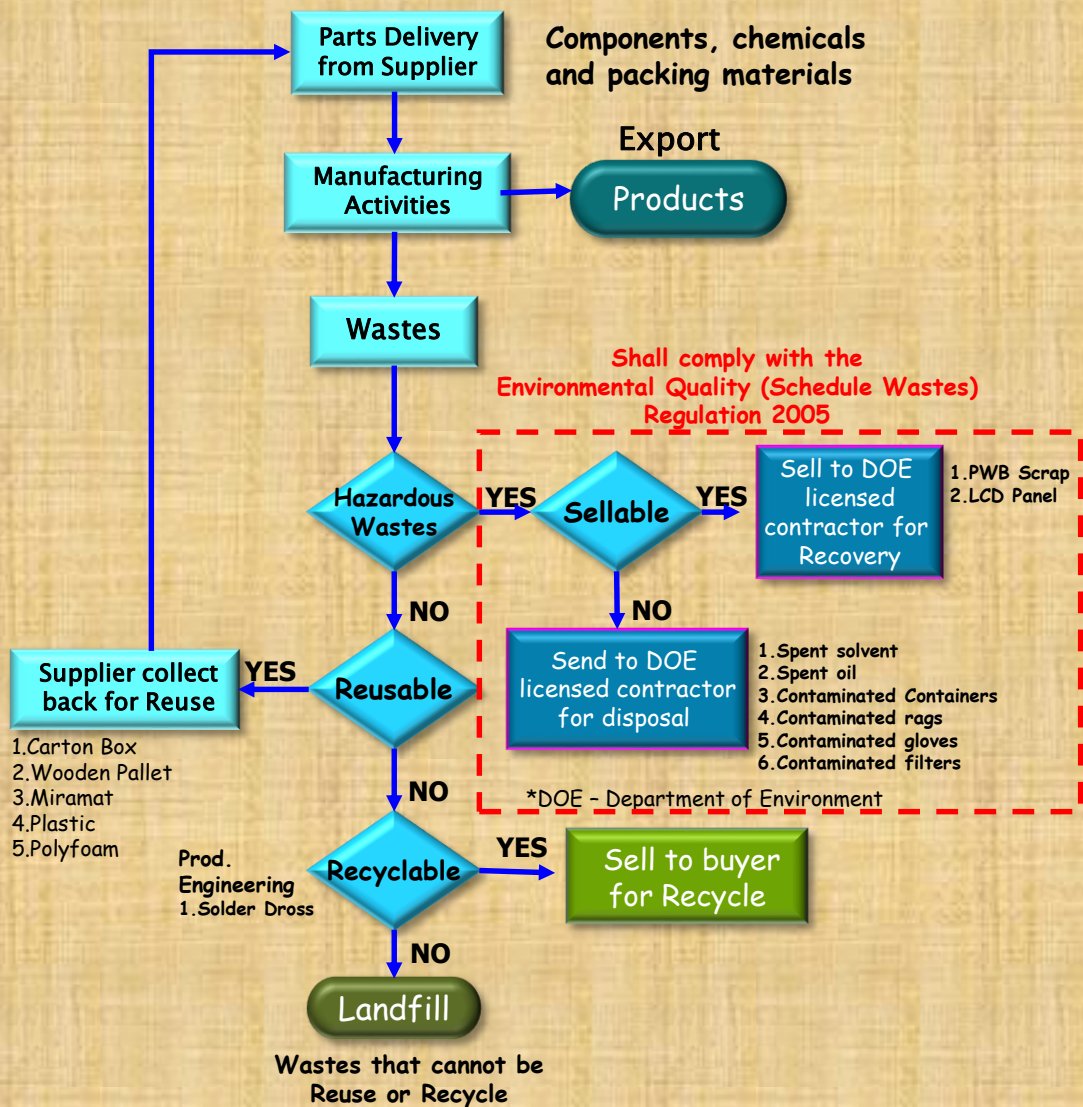
Consume	Environment al Impact	Measure to reduce environmental impact
<p>City water</p> 	<p>Depleting natural resources</p> 	<p>1. Set up the rain water harvesting system for air-condition cooling tower and washroom.</p>  
<p>Raw materials, electronics components, packing materials etc.</p> 	<p>Depleting natural resources</p> 	<p>1. Sent used packing materials such as carton box, plastics, polyfoam etc. to recycler contractor.</p> 

Measures to reduce environmental impacts

Environment al burden	Environmenta l Impact	Measure to reduce
<p>Hazardous wastes</p> 	<p>Land or water pollution</p> 	<p>1. Dispose through Department of Environmental licensed contractor for fully recovery or partial recovery or secured landfill or incineration.</p> 
<p>Landfill wastes</p> 	<p>Land or water pollution</p> 	<p>1. Dispose at Local authority gazette sanitary landfill.</p> 

Waste Management

Wastes Management



The above diagram shows SMM wastes management flow.

Several measures had been taken in order to reduce industrial waste, such as : -

- 1) Encourage local suppliers or in proximity supplier to take back their packaging materials for reuse.
- 2) Intensively practice the waste segregation according to the wastes category.
- 3) Installed solder recover machine to recover solder from our solder dross for reuse back in solder machine.

Besides the measures mentioned above could reduce the environment burden, those activities could also help in preserving the natural resources and reduce the operating costs.

Reuse Activities



Reuse Carton Black Box



Standard Packing

Empty Carton

One of the measures taken to reduce industrial waste, we practice to return the materials can be **REUSED** to our suppliers.
In addition to reducing industrial waste, we also use less natural resources. In other words it helps in maintaining environmental sustainability.

Reducing wastes size

1. Paper



1) Wastes from collecting point



2) Compacter



3) Turn them into bundles for easy storage and transportation

2. Plastic



Industrial wastes such as papers and plastics that send to recycling center, will be compacted to downsized. The objective was to maximize storage space and reduce the use of transport.

Solder Recovery System

To achieve the reduction of industrial waste, SMM has improved its industrial waste management by recover pure solder from solder dross with solder recovery machine.

With this Solder Recovery System we are not only reduce the industrial wastes but also it help us in reducing solder cost.

During the year 2023, around **3,842kg** of this recycled production was generated. Total saving for company is **MYR 387,734.64**

Cost per 1kg solder : Myr 100.92

Recover and Reuse



Solder dross



Solder recovery machine



Solder ingot

Energy Saving

Energy Saving Measures

Stick an appeal sticker
“HELP CONSERVE ENERGY”
to every lighting, air-condition
switches and power socket outlet.



Installed timer to the rest
room
air conditioner system.



08:00

17:15

Delay “ON” and Early
“OFF”
policy for air-condition

Rainwater Harvesting System

Measures to reduce usage of city water

Rainwater for air condition cooling tower / washroom



SMM setup the 7,000 gallons Poly rain water storage tank for supplying water to cooling tower system. We do this as the alternative way to supply water besides using the city water.

Based on our record, we used approximately **4331 m³** of rain water.

The approximate average amount saving was

$4331 \text{ m}^3 \times \text{MYR}3.30 \text{ per m}^3 = \text{MYR } 14292.30$ per year.

Education & Awareness

In our continuous commitment to level up our employees knowledge on environment, we had managed to conduct our in-house environmental awareness trainings. The trainings are as below.-

No	Subject	Date
1	EMS Procedure	01st June 2023
2	Restriction Of Hazardous Substances	30th June 2023
3	ISO 14001:2015 Understanding & Implementation	23rd-24th Nov 2023
4	ISO 14001:2015 Aspect & Impact	7th-8th Dec 2023

*Publisher***MOHD AIZUDDIN BIN SAMAD**

GENERAL AFFAIRS DEPARTMENT

SHARP MANUFACTURING CORPORATION (M) SDN. BHD (188562 – V)

PLO. NO. 225, KAWASAN PERINDUSTRIAN SRI GADING,

83009 BATU PAHAT, JOHOR, MALAYSIA. P.O BOX 513

TEL: +06-07-4302444

FAX: +06-07-4558972