

**SHARP**

Be Original.

**SMM**

**ENVIRONMENTAL SITE REPORT  
2022**



## MD MESSAGE



Won Yin Hock  
**Managing Director**

*Sharp Manufacturing Corporation (SMM) is located in the southern region of peninsular Malaysia. We are site manufacturing LCD TV of different models exported to many countries throughout the world and computer entertainment system.*

*Besides producing the high quality products, we also committed in preservation and protection of the environment. SMM carries out its operations in line with compliance to Malaysian and corporate environmental directives, regulation and laws.*

*SMM is continuously carried out environmental activities inside and outside the company to interact with both our employees and neighborhood society to up lifts their environmental awareness.*

*This report describes the main environmental activities carried out in the year of FY2021 (April 2021 – March 2022) by the company for your better understanding.*

# TABLE OF CONTENTS

No	Contents	Page
1	MD message	2
2	Summary of the company's business	
	2.1 Location Map	4
	2.2 Company Profile	5
	2.3 Factory Layout	6
3	Environmental Policy	7 ~ 8
4	Company ISO Certification	9
	4.1 ISO Certification	10
	4.2 Environmental Organization Chart	11
5	Environmental Objective and Achievement	12 ~ 13
6	Information and indicators that describe the status of activities for environmental impacts and reduction measures	
	6.1 Environmental Load	14 ~ 17
7	Status of Social Contribution Related to Environment	18 ~ 19
8	Emergency preparedness	20
9	Contact Information	

# LOCATION MAP



SMM was located in strategic industrial park, **Kawasan Perindustrian Sri Gading**, 25km from Ayer Hitam North South Highway Interchange, 120km from Singapore and 260km south from capital of Malaysia, Kuala Lumpur.

# **SMM COMPANY PROFILE**

<b>COMPANY NAME</b>	<b>: SHARP MANUFACTURING CORPORATION (M) SDN.BHD.</b>
<b>CO. REG. NO.</b>	<b>: (198901011260)</b>
<b>ADDRESS</b>	<b>: PLO-225 KAWASAN PERINDUSTRIAN SRI GADING, 83009 BATU PAHAT, JOHOR DARUL TAKZIM</b>
<b>DIRECTORS:</b>	
<b>MANAGING DIRECTOR</b>	<b>: MR. WON YIN HOCK</b>
<b>DEPUTY MD</b>	<b>: MR. LEE YEO KIANG</b>
<b>FINANCE &amp; ADMIN DIR</b>	<b>: MR. TAN HEE LAI</b>
<b>DATE FOUNDED</b>	<b>: OCTOBER 1989</b>
<b>PROD. STARTED</b>	<b>: JUNE 1990</b>
<b>PAID-UP CAPITAL</b>	<b>: RM 162 MILLION</b>
<b>SHARE HOLDERS</b>	<b>: SHARP CORPORATION [100%]</b>
<b>FISCAL YEAR</b>	<b>: MARCH</b>
<b>LINE OF BUSINESS:</b>	
<b>PRODUCTION OF</b>	<b>: Liquid Crystal Display (LCD) Television / Liquid Crystal Display Monitor and their kits thereof, PWB assembly and their kits thereof &amp; Computer Entertainment System (CES) and their kits thereof.</b>
<b>EXPORT MARKET</b>	<b>: JAPAN, ASIA, EUROPE, AMERICA</b>
<b>LAND AREA</b>	<b>: 142,387M<sup>2</sup></b>
<b>BUILD-UP AREA</b>	<b>: 74,612M<sup>2</sup></b>
<b>EMPLOYEES</b>	<b>: 1445 (1<sup>st</sup> August 2022)</b>
<b>ACHIEVED</b>	<b>: ISO 9001 BY SIRIM IN NOVEMBER 1994 ISO 14001 BY SIRIM IN OCTOBER 1998</b>

# FACTORY LAYOUT

## Plant 2

LCD TV (19"~90")  
Final Assembly  
process, Purchasing,  
Engineering,  
Administration  
office, Shipping and  
Warehouse.  
(15,720 m<sup>2</sup>)

## Plant 3

Module Repair,  
Warehouse and  
Gaming  
Entertainment  
Production  
(46,517 m<sup>2</sup>)



## Plant 1

SMT Auto process,  
Production Checker,  
Parts Control and  
Training Center.  
(12,375 m<sup>2</sup>)

# **SMM ENVIRONMENTAL POLICY**

# **ENVIRONMENTAL POLICY**

*This environmental policy indicates our commitment to protect the environment. We will explore and apply the best practical means to reduce adverse significant impact from our activities, products & services in our continuous quest to manufacture the product with the best quality and environmental friendly.*

*The following pro-active efforts shall be taken in order to fulfill our commitment:*

*Identify existing and potential pollution. Recommended actions, objectives & targets will be established in the environmental programs to ensure a progressive and systematic means in pollution prevention, waste reduction & minimization of energy consumption*

|

*Ensure compliance with applicable legal requirements & with other requirements which relate to its environmental aspects.*

|

*Promote environmental protection in line with Sharp environmental policy.*

|

*Annually review this environmental policy together with the environmental objectives & targets.*

|

*Publicize and communicate this environmental policy to all persons who work for or on behalf & make it readily available to the public.*

*We will achieve continual improvement and prevention of pollution through our systematic Environmental Management System.*



# ISO CERTIFICATION

# CERTIFICATION

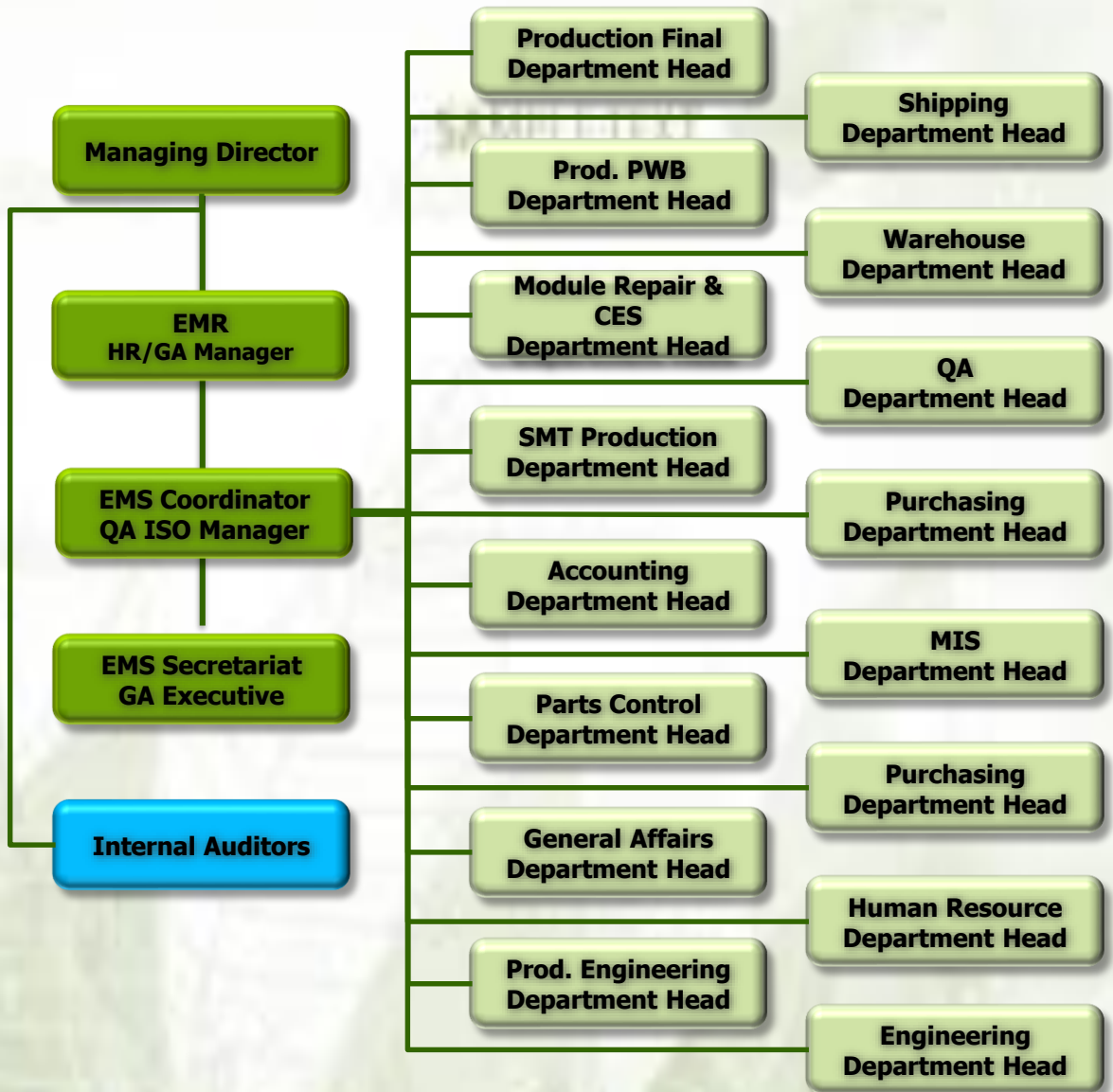
## ISO 9001:2015 CERTIFICATE



## ISO 14001:2015 CERTIFICATE

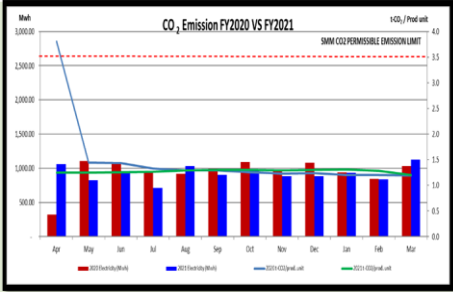


# EMS Organization Chart



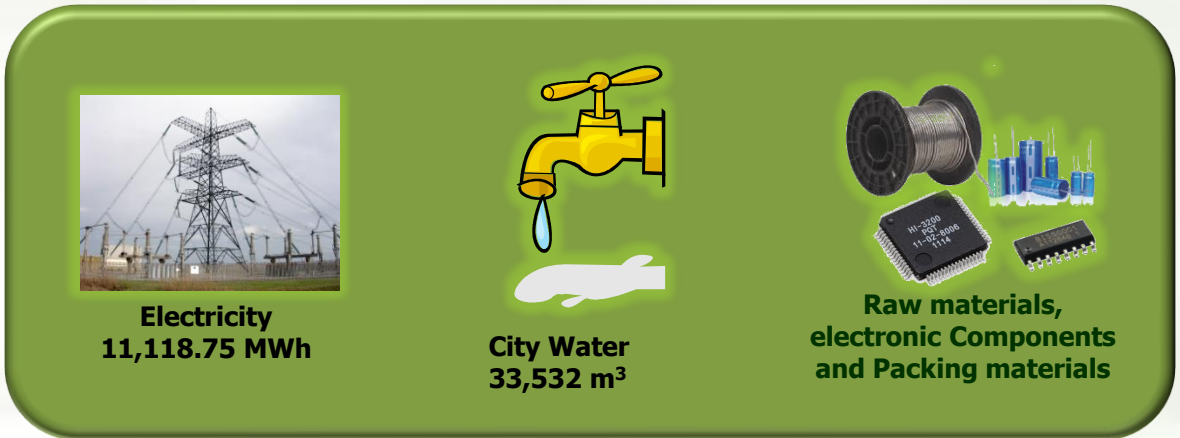
# **ENVIRONMENTAL OBJECTIVE AND TARGET**

# Objectives & Targets

Objectives	Targets	Results
<p>1. Reduction of CO2 emission thru the efficiency of the electricity consumption.</p>	<p>To ensure the release of CO2 per production unit is not more than 3.5 t-CO2/prod. unit <b>&lt; Target Achieve &gt;</b></p>	 <p>The chart displays monthly CO2 emissions for FY2020 (red bars) and FY2021 (blue bars) from April to March. The y-axis represents tCO2/Prod unit, ranging from 0.0 to 3.5. A red dashed horizontal line at 3.5 indicates the SMM CO2 Permissible Emission Limit. All monthly emissions for both years are well below this limit, with FY2021 generally showing lower emissions than FY2020.</p>
<p>2. Use renewable power source.</p>	<p>To install Solar Power Battery charger.</p>	<p>Warehouse department had installed the Solar Power Forklift Battery charger.</p>
<p>3. Install additional Poly tank to increase the volume of harvesting rain water to be use for air conditioning cooling tower.</p>	<p>Reduce city water usage.</p>	<p>Using 5 units of 7K gallons (31.82 m<sup>3</sup>) of Poly tank to increase the capacity of water harvesting system volume approximately to 35K gallons (159.10 m<sup>3</sup>)</p>

# **ENVIRONMENTAL LOAD**

# ENVIRONMENTAL LOAD



**Electricity**  
11,118.75 MWh

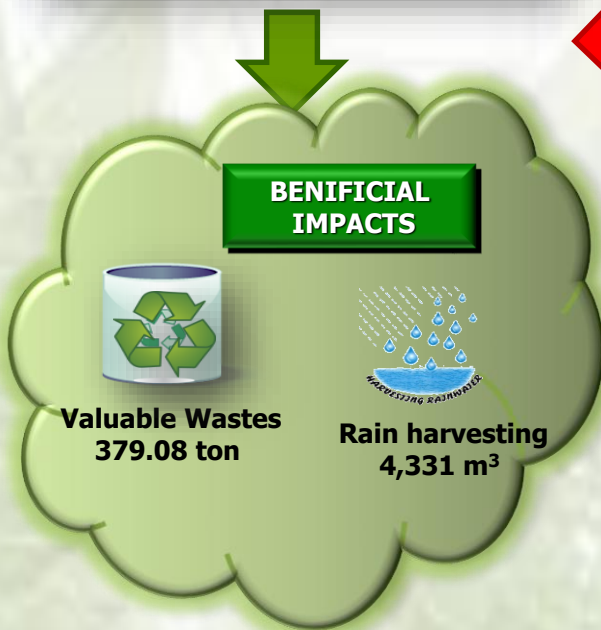
**City Water**  
33,532 m<sup>3</sup>

**Raw materials,  
electronic Components  
and Packing materials**

**Production**




**Products**



**BENEFICIAL IMPACTS**

**Valuable Wastes**  
379.08 ton

**Rain harvesting**  
4,331 m<sup>3</sup>



**ADVERSE IMPACTS**

**CO<sub>2</sub>**  
5,937.41 t-CO<sub>2</sub>

**Hazardous Wastes**  
1.46 ton

**Wastewater**  
37,863 m<sup>3</sup>

**Landfill Waste**  
22.23 ton

# Solar Power Forklift Battery Charger



24 units of Sharp solar panel ND-R240A5 installed on the Plant 2 roof.



Control panel for Solar battery charger.



Forklift will ready for use after 4 hour charging.



Connect the Solar battery charger terminal with forklift battery terminal for recharging.

We installed Solar Power Forklift Battery Charger at Warehouse. This is one of SMM initiatives to reduce CO<sub>2</sub> emission and use the renewable energy.

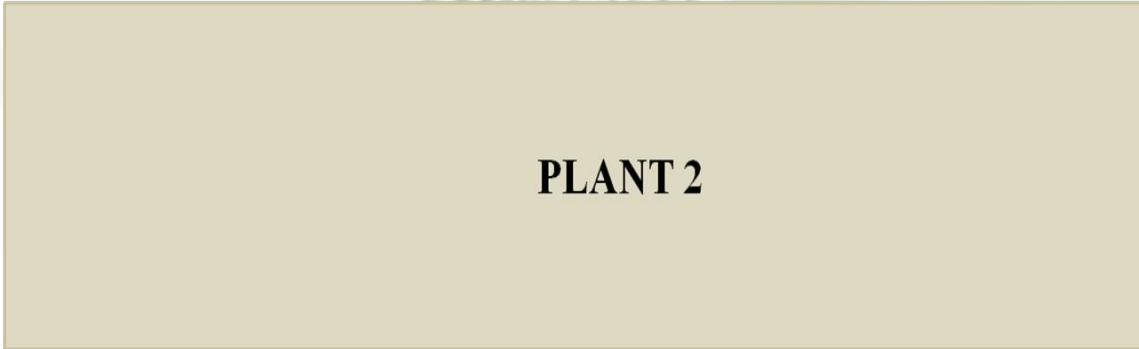
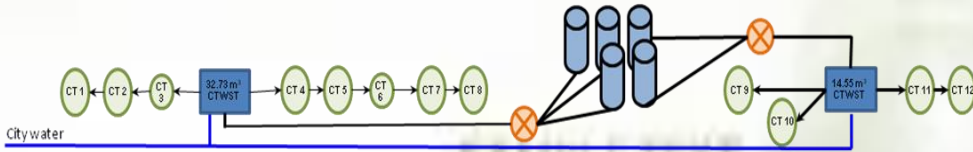
## Electric Forklift battery charger cost calculation:

- a) Charger consumption = 12.20Kw & 20A, 3 phase/415V
- b) CO<sub>2</sub> emission = 12.20 Kw X 5 hours X 220 work days X 0.655  
= 8,790.1 kg-CO<sub>2</sub> / year

With using the Solar Power Forklift Battery charger, we manage to reduce CO<sub>2</sub> emission during Forklift battery charging approximately 8,790.1 kg-CO<sub>2</sub> per year.



# Rainwater Harvesting System



**Legend**



Rain Water Tank  
Capacity 31.82 m<sup>3</sup>

CT Cooling Tower

CTWST Cooling Tower Water Supply Tank



For the long term cost saving, SMM decided to setting up the additional Poly rain water tank to supply water for all cooling tower in the Plant 2 and Plant 1.

In April 2021 until March 2022, SMM used around **4,331 m<sup>3</sup>**

Total saving for SMM is 4,331m<sup>3</sup> x MYR 3.30 = **MYR 14,292.30**

# **EDUCATION AND AWARENESS**

**In our continuous commitment to level up our employees knowledge on environment, we had managed to conduct our in-house environmental awareness trainings. The trainings are as below.-**

<b>No</b>	<b>Subject</b>	<b>Date</b>
<b>1</b>	<b>Seminar Kawalan Pencemaran Udara</b>	<b>06-07/Dec/2021</b>
<b>2</b>	<b>Environmental Aspect &amp; Impact</b>	<b>22/June/2022</b>
<b>3</b>	<b>Environmental Procedure</b>	<b>08/July/2022</b>
<b>4</b>	<b>Fire Drill &amp; Chemical Spillage Handling</b>	<b>30/Aug/2022</b>

# Emergency Preparedness

## Fire Drill & Chemical Spillage Exercise

Date : 30 August 2022 (Tuesday)

### Activity:-

1. Building evacuation.
2. Head count by each department.
3. Fire fighting demonstration
  - a) Hose & hydrant by SMM
  - b) Fire Extinguisher by workers
4. First aid demonstration.
5. Chemical spillage handling by ERT & Fire Brigade Department

We received cooperation from Batu Pahat Fire Brigade Department & Ambulance from Batu Pahat district hospital in this exercise.



Speech by Mr. Won Yin Hock



Building evacuation.



First Aiders treating "victims".

## Publisher

**MOHD AIZUDDIN SAMAD**

**EMS Secretariat**

SHARP MANUFACTURING CORPORATION (M) SDN. BHD (188562 – V)

PLO. NO. 225, KAWASAN PERINDUSTRIAN SRI GADING,

83009 BATU PAHAT, JOHOR, MALAYSIA. P.O BOX 513

TEL: +06-07-4302444

FAX: +06-07-4559348